

iDAQ™ Quick Start Guide

Step 1

Attach the external antenna to the iDAQ™ unit and connect it to the USB power supply using the cable provided. The green indicator on the unit should be illuminated.

Step 2

Using a (Wi-Fi enabled) PC or tablet, perform a scan for wireless devices. Exactly how this is done will vary according to which operating system is used. See Figure.1 below for an example:



Figure.1 Wi-Fi Scan

Step 3

We must ensure that the PC's wireless adaptor is on the same network as the iDAQ™ unit otherwise communication will not be possible. In Microsoft Windows 7 these settings can be found under the "Open Network and Sharing Center" option (see Figure.2):

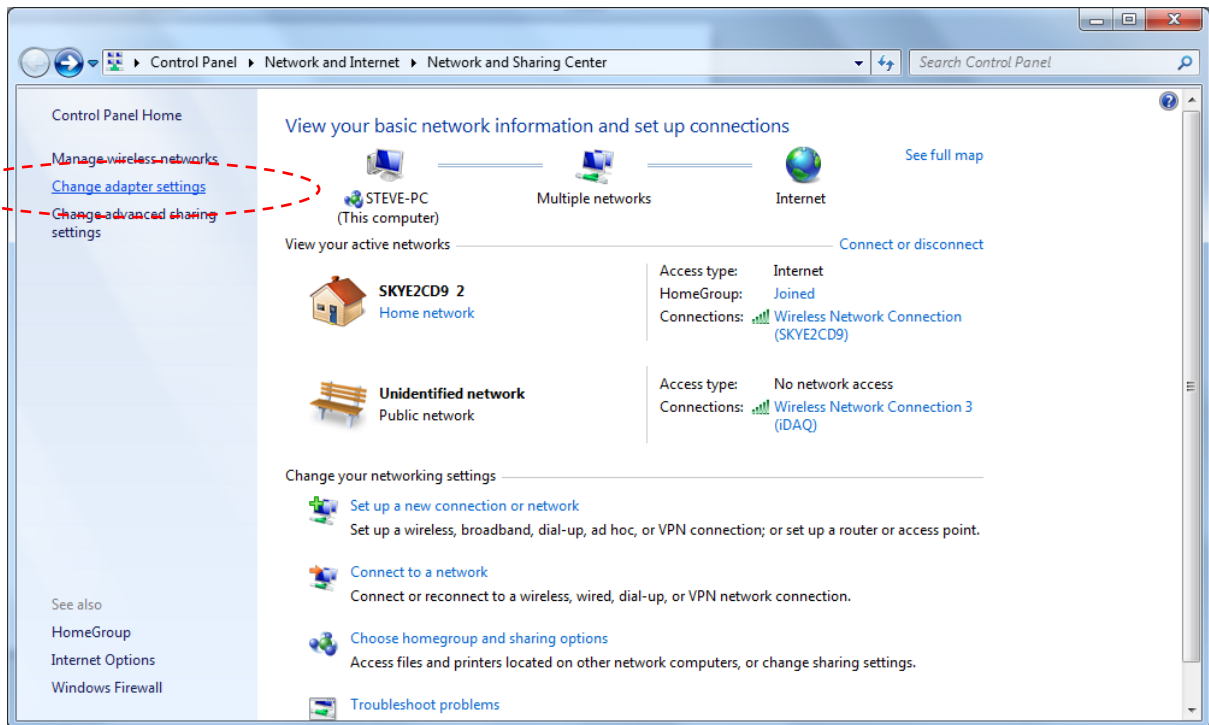


Figure.2 Network Sharing Center

Click on the “Change adapter settings” option. Navigate to the active network adaptor and double click on it. The screen below in Figure.3 will appear. Click on the “Properties” button:

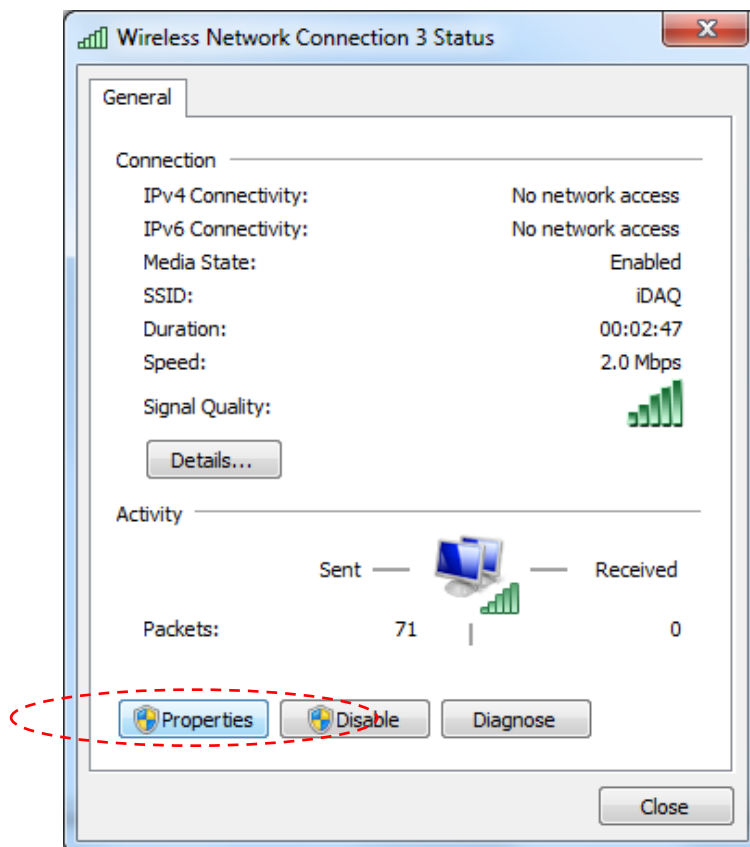


Figure.3 Wireless Network Connection Status

This will show the network connection properties window below:

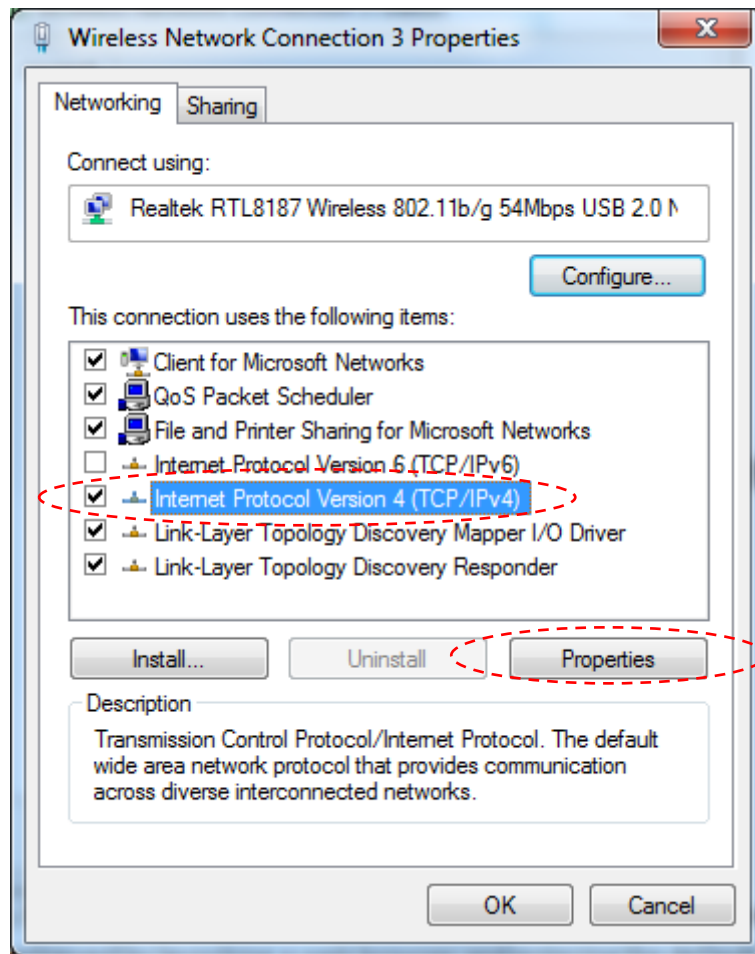


Figure.4 Network Connection Properties

Select the “Internet Protocol Version 4 (TCP/IPv4)” option and click the “Properties” button. The network adapter IP address and Subnet mask will be shown as follows:

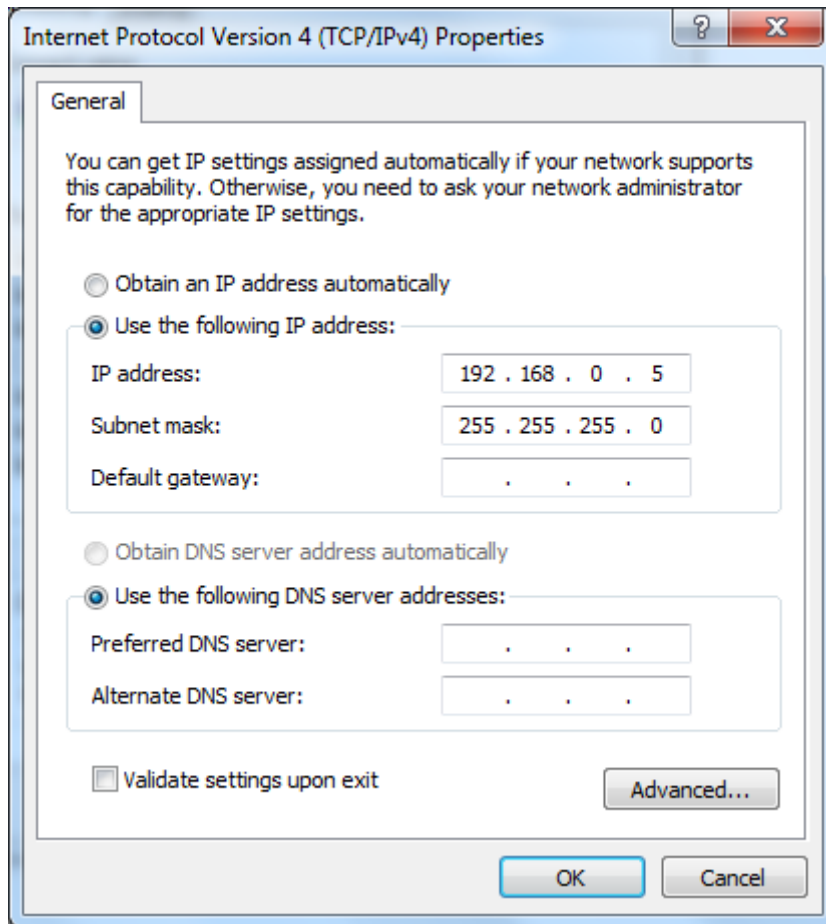


Figure.5 Internet Protocol Version 4 Properties

Ensure that the “Use the following IP address” option is selected and then enter an IP address in the range of 192.168.0.1 to 192.168.0.255 (**Except address 192.168.0.10 this is reserved for the iDAQ™ unit**) and a Subnet mask of 255.255.255.0. Click “OK”.

Step 4

It should now be possible for the user to access the built-in web server and start to utilise the unit. This is achieved by launching a web browser (recommend Mozilla Firefox) and entering the default IP address of **http://192.168.0.10**. You will then be prompted for a user name and password (see Figure.6); the default settings are as follows (case sensitive):

User name: **Administrator**

Password: **Admin**

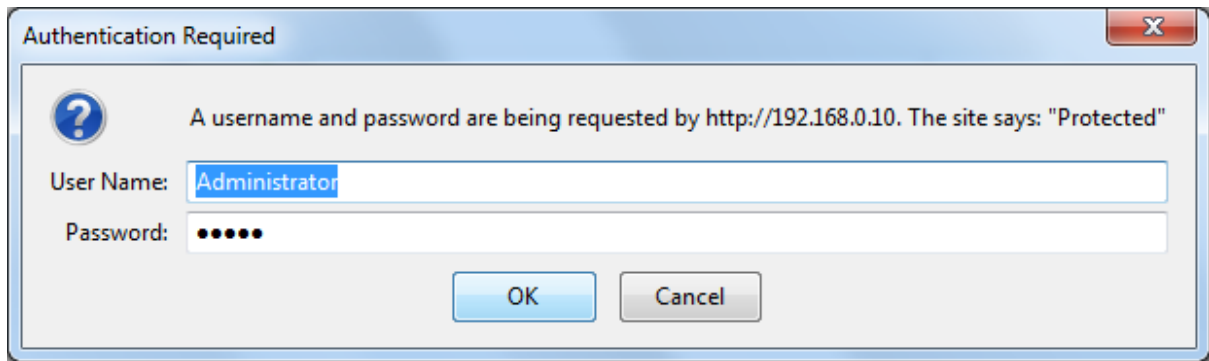


Figure.6 Authentication Box

Click "OK" and you will then be taken to the on-board user interface. Please refer to the User's Guide for help with the user interface and unit setup.