

Using IP Search

IP search should be used as the first step in configuring your device. This application is used to find your device and assign it an IP on your subnet. After this step is done, you can continue to the web configuration by double clicking the device in the “Search results display zone” (Figure 1).

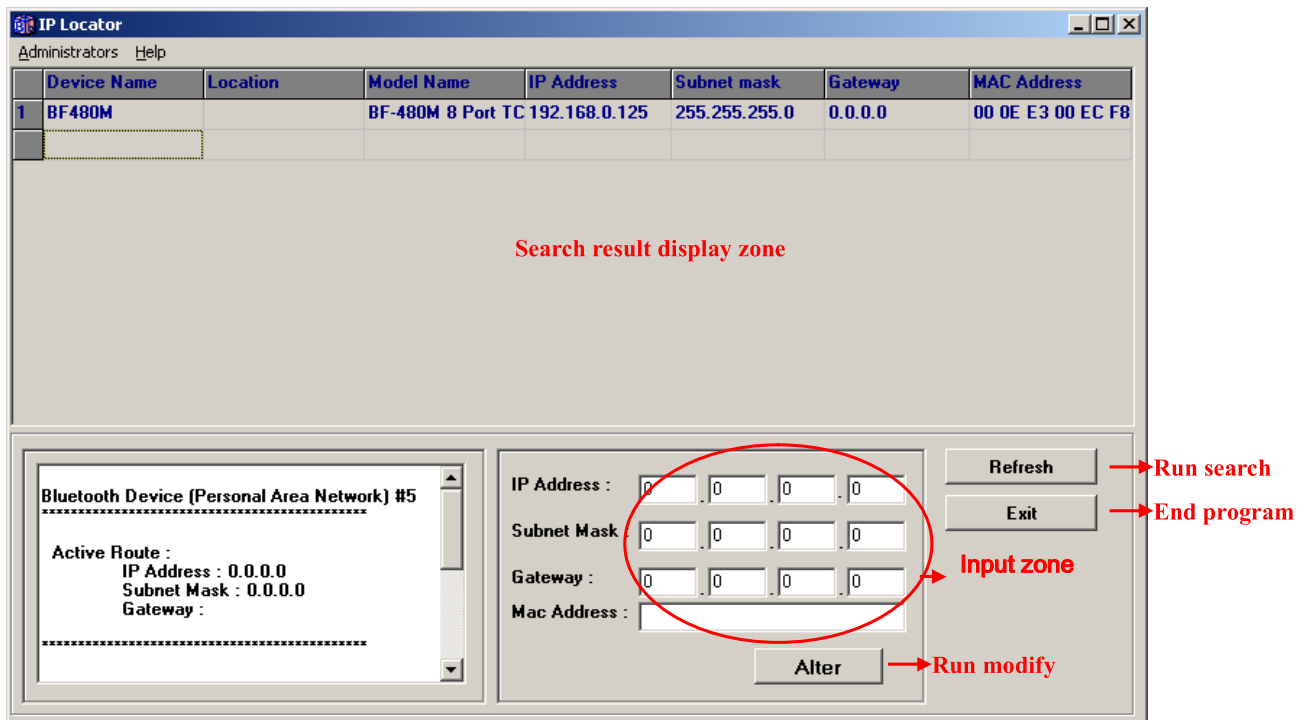
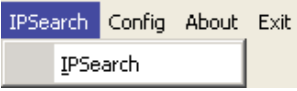


Figure 1: IP Search

1. Run vcom.exe under Start->Programs->VCOM
2. Open the IP Search application under the IP Search tab.

3. Press “Refresh” to search. The result of search will show in “Search result display zone” (Figure 1). If you can’t find the equipment connected, please check to make sure the connections are correct.
4. Click on your device in the “Search result display zone”. Enter the desired IP, Subnet Mask, and Gateway values in the “Input zone” (Figure 1).
5. Click “Alter” (Figure 1) to run the modification. If successful the following message will be displayed.



6. Click “Refresh” (Figure 1) to verify that the values have changed.

Using VCOM

VCOM should be used as the last step in configuring your device. This application is used to associate your device's set IP and communication port number with a created virtual COM port. After this step you can test the COM port with your software by using the “Log” tab (Figure 2).

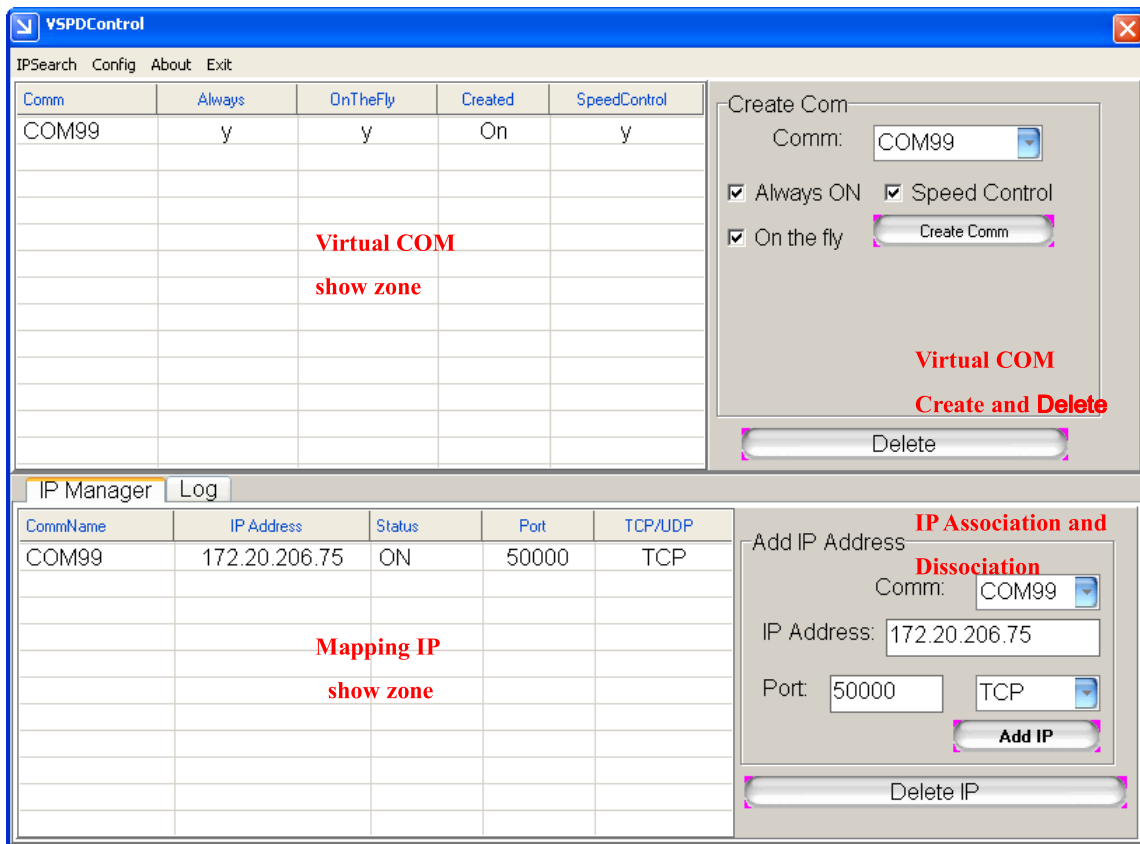


Figure 2: VCOM

1. Run vcom.exe under Start->Programs->VCOM
2. Choose a desired COM port from the “Comm” pull-down tab in the “Create Com” box and click “Create Comm” (Figure 2).
3. The Created com port should be listed in the “Virtual COM show zone” (Figure 2).
4. Choose your COM port from the “Comm” pull-down tab in the “Add IP Address” box (Figure 2).
5. Enter your devices IP address, communication port number, and protocol and click “Add IP” (Figure 2).
6. The Associated IP address should be listed in the “Mapping IP show zone” (Figure 2) and the following message will be displayed.

