
PCX-4288
16-channel isolated Digital
Input and
16-channel relay output

Copy Right Notice

The information in this manual is subject to change without prior notice in order to improve reliability, design and function and does not represent a commitment on the part of the manufacturer. No part of this manual may be reproduced, copied, or transmitted in any form without the prior written permission of manufacturer.

Acknowledgment

Products mentioned in this manual are mentioned for identification purpose only. Products names appearing in this manual may or may not be registered trademarks or copyright of their respective companies

Printed Sep. 2002 Rev 1.0

Table of Contents

Chapter 1 Introduction	1
1.1 Introduction.....	2
1.2 Features.....	2
1.3 Applications.....	2
1.4 Specifications.....	3
1.5 Software Supporting.....	4
1.6 Programming Library.....	4
Chapter 2 Installation	5
2.1 What You Have.....	6
2.2 Unpacking.....	6
2.3 Hardware Installation Outline.....	6
2.4 PCB Layout.....	7
2.5 Installation Procedures.....	8
2.6 Device Installation for Windows Systems.....	8
2.7 Connector Pin Assignment of PCX-4288.....	9
Chapter 3 Registers Format	11
3.1 PCI PnP Registers.....	12
3.2 Digital Input/Output Register Address Map.....	13
3.3 PCI controller register address map.....	13
Chapter 4 Jumper setting	15
4.1 Card number setting.....	16
Chapter 5 Operation Theorem	17
5.1 Digital Input Channels.....	18
5.2 Digital Output Channels.....	18
5.3 Edge Change Detection.....	19
Chapter 6 Libraries	21
6.1 Libraries Installation.....	22
6.2 How to use the Functions in PCIDAQ.DLL.....	22
6.3 Summary of function calls.....	23
6.4 W_4288_Open.....	24
6.5 W_4288_GetCardsID:.....	25
6.6 W_4288_Version.....	26
6.7 W_4288_GetBusSlot.....	27
6.8 W_4288_Close.....	28
6.9 W_4288_ReadDI.....	29

6.10 W_4288_WriteRelay.....	30
6.11 W_4288_ReadRelay.....	31
6.12 W_4288_Set_RelayBit.....	32
6.13 W_4288_Reset_RelayBit.....	33
6.14 D_4288_Read_IntStatus.....	34
6.15 W_4288_Clear_IntStatus.....	35
6.16 W_4288_IntEnable.....	36
6.17 W_4288_IntDisable.....	37
Chapter 7 PI-837 Terminal board	39

Chapter 1

Introduction

1.1 Introduction

The PCX-4288 is a 16-ch relay actuator and 16-ch isolated digital input card for the PCI bus. Its sixteen on-board SPDT relays are ideal for applications such as device ON/OFF control or small power switched. For easy monitoring, each relay is equipped with one red LED to show its ON/OFF status.

The PCX-4288's sixteen optically-isolated digital input channels are ideal for digital input in noisy environments or with floating potentials.

This I/O card fully implements the PCI local bus specification Rev 2.1. All bus relative configurations, such as base memory and interrupt assignment, are automatically controlled by BIOS software.

1.2 Features

The PCX-4288 isolated digital I/O card provide the following advanced features:

- ◆ 16 relay output channels and 16 isolated digital input channels
- ◆ LED indicators to show activated relays
- ◆ Output status read-back
- ◆ Keep relay output values when hot system software reset
- ◆ High-voltage isolation on input channels (2,500 V_{DC})
- ◆ On-board digital filter circuit
- ◆ High over-voltage protection (70 V_{DC})
- ◆ Wide input range (0 ~ 30 V_{DC})
- ◆ Interrupt handling capability
- ◆ 37-pin D-type connector
- ◆ Board card number

1.3 Applications

- ◆ Laboratory and Industrial automation
- ◆ Industrial ON/OFF control
- ◆ Switch status sensing
- ◆ PC-based Industrial Machinery
- ◆ Testing & Measurement
- ◆ Laboratory & Education
- ◆ External relay driving

1.4 Specifications

◆ Relay Outputs

Contact Rating: 0.3A/120V AC,DC/1A 30V DC

Contact arrangement: Output channel 0 -3 are form C

Output channel 4-7 are Form A

Operating time: 5 mSec

Release time: 10 mSec

Expected life > 100,000 times (at 30V, 1A)

◆ Isolated Inputs

Type: opto-isolated (PC-814)

Input voltage: DC 5-24V (0- 1KHz)

Input impedance: 4.7K ohm (or optional 47K ohms for +24Vdc input range)

Response time: 20u Sec

Isolated: 500v channel-channel / channel - Ground

Interrupt: Pos. or Neg. edge interrupt programmable (Ch #0,Ch #8)

◆ Software:

Software Toolkit (DLL, ACtiveX) for Windows 98/2000/NT/XP

Software Toolkit for Labview, Intouch

◆ Environmental:

Power requirements: +5V 600mA (typical)

Operation Temp: 0 to 50C

Storage Temp: -20 to 70C

Humidity: 0 to 90% none-condensing

Dimensions: 180 X 105 mm

1.5 Software Supporting

Inlog provides versatile software drivers and packages for users' different approach to built-up a system. We not only provide programming library such as DLL for many Windows systems, but also provide drivers for many software package such as LabVIEW™ ,Intouch™ and so on. All the software options are included in the provided CD.

1.6 Programming Library

The provided CD includes the function libraries for many different operating systems, including:

- ◆ **DOS Library:** Borland C/C++ and Microsoft C++, the functions descriptions are included in this user's guide.
- ◆ **Windows 98/2000/NT/Me/XP DLL:** For VB, VC++, BC5, the functionsDescriptions are included in this user's guide.
- ◆ **Windows 98/2000/NT/Me/XP ActiveX:** For Windows's applications
- ◆ **LabVIEW ® Driver:** Contains the VIs, which are used to interface with NI's LabVIEW ® software package. Supporting Windows 95/98/NT/2000. The LabVIEW ® drivers are free shipped with the board.
- ◆ **InTouch Driver:** Contains the InTouch driver which support the Windows 98/2000/NT/XP. The The InTouch ® drivers are free shipped with the board.

Chapter 2

Installation

This chapter describes how to install the PCX-4288 card. Please follow the follow steps to install the PCX-4288 card.

2.1 What You Have

In addition to this *User's Manual*, the package includes the following items:

- ◆ PCX-4288 board
- ◆ Driver/utilities CD
- ◆ This user's manual

If any of these items is missing or damaged, contact the dealer from whom you purchased the product. Save the shipping materials and carton in case you want to ship or store the product in the future

2.2 Unpacking

Your PCX-4288 card contains sensitive electronic components that can be easily damaged by static electricity. The operator should be wearing an anti-static wristband, grounded at the same point as the anti-static mat. Inspect the card module carton for obvious damage. Shipping and handling may cause damage to your module. Be sure there are no shipping and handling damages on the module before processing.

After opening the card module carton, extract the system module and place it only on a grounded anti-static surface component side up. Again inspect the module for damage. Press down on all the socketed IC's to make sure that they are properly seated. Do this only with the module place on a firm flat surface.

2.3 Hardware Installation Outline

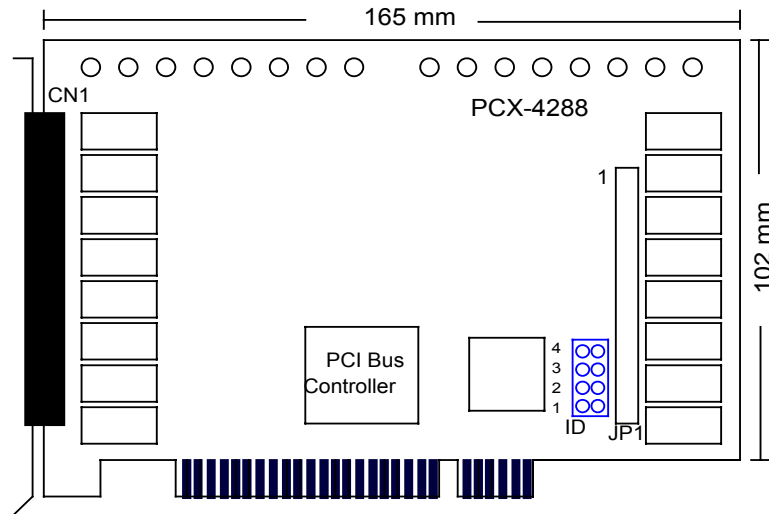
◆ PCI configuration

The PCI cards are equipped with plug and play PCI controller, it can request base addresses and interrupt according to PCI standard. The system BIOS will install the system resource based on the PCI cards' configuration registers and system parameters (which are set by system BIOS). Interrupt assignment and memory usage (I/O port locations) of the PCI cards can be assigned by system BIOS only. These system resource assignments are done on a board-by-board basis. It is not suggested to assign the system resource by any other methods.

◆ PCI slot selection

The PCI card can be inserted to any PCI slot without any configuration for system resource.

2.4 PCB Layout



Where

CN1: Optical digital input and relay channel #0~channel #7 connector

JP1: Relay channel #8~channel #15 connector

ID: Card number selection jumper

2.5 Installation Procedures

1. Turn off your computer.
2. Turn off all accessories (printer, modem, monitor, etc.) connected to your computer.
3. Remove the cover from your computer.
4. Setup jumpers on the card.
5. Before handling the PCI cards, discharge any static buildup on your body by touching the metal case of the computer. Hold the edge and do not touch the components.
6. Position the board into the PCI slot you selected.
7. Secure the card in place at the rear panel of the system.

2.6 Device Installation for Windows Systems

Once Windows 95/98/2000 has started, the Plug and Play function of Windows system will find the new PCX cards. If this is the first time to install PCX cards in your Windows system, you will be informed to input the device information source.

2.7 Connector Pin Assignment of PCX-4288

There are two connectors labeled “CN1” and “CN2”. The CN1 connector is a 37-pin D-type connector and CN2 connector is a 40-pin FRC connector.

The CN2 can be converted to 37-pin D-type connector by using converting cable attached in the package.

The pin assignment of the CN2 (37-pins D-type connector) includes the isolated digital input channels (DI_0~DI_15) and relay output channels (Relay_0~Relay_7)

♦ The CN2 pin assignment is as shown in Figure 2-1

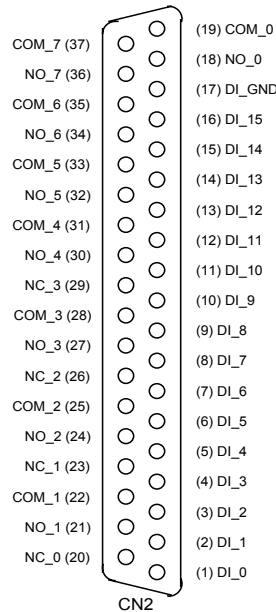


Figure 2-1 Pin Assignment of PCX-4288 connector CN2

Legend:

- DI_n: Digital input /output channel #n
- DI_GND: Ground return path of input channels
- NO_n: Relay output channel #n (normal open)
- NC_n: Relay output channels #n (normal close)
- COM_n: Relay common #n

♦ The CN1 pin assignment is as shown in Figure 2-2

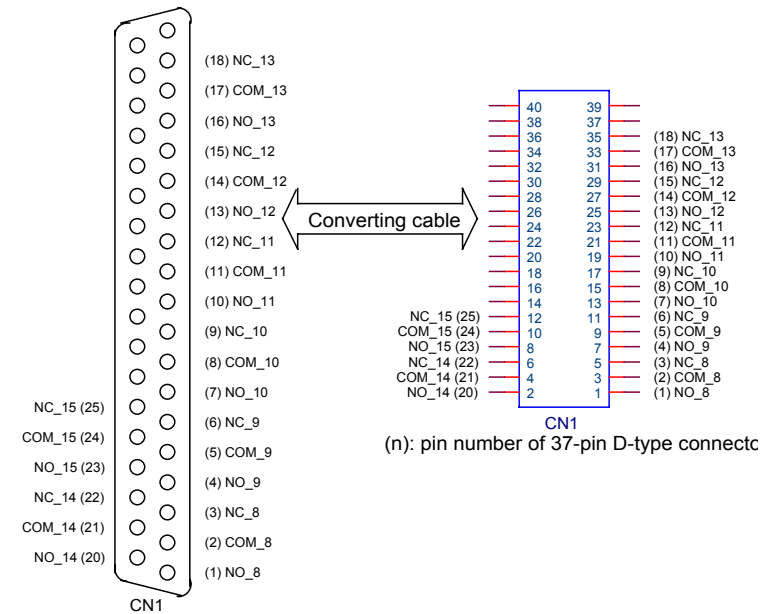


Figure 2-2 Pin Assignment of PCX-4288 connector CN1

Legend:

- NO_n: Relay output channel #n (normal open)
- NC_n: Relay output channels #n (normal close)
- COM_n: Relay common #n

Chapter 3

Registers Format

This information is quite useful for the programmers who wish to handle the card by low-level programming. However, we suggest user have to understand more about the PCI interface then start any low-level programming. In addition, the contents of this chapter can help users understand how to use software driver to manipulate this card.

3.1 PCI PnP Registers

There are two types of registers: PCI Configuration Registers (PCR) and Peripheral Interface Bus (PIB). The PCR, which is compliant to the PCI-bus specifications, is initialized and controlled by the plug & play (PnP) PCI BIOS..

The PCI bus controller Tiger 100/320 is provided by Tigerjet Network Inc. (www.tjnet.com). For more detailed information of PIB, please visit Tigerjet technology's web site to download relative information. It is not necessary for users to understand the details of the PIB if you use the software library. The PCI PnP BIOS assigns the base address of the PIB. The assigned address is located at offset 14h of PIB .

The 4264 board registers are in 32-bit width. But only lowest byte (bit0~bit7) is used. The users can access these registers by only 32-bit I/O or 8-bit I/O instructions. The following sections show the address map, including descriptions and their offset addresses relative to the base address.

3.2 Digital Input/Output Register Address Map

There are 16 isolated digital inputs and 16 relay output channels on PCX-4288, each bit of based address is corresponding to a signal on the digital input or output channel.

3.3 PCI controller register address map

◆ Reset control register

The PCX-4288 is in inactive state when the system power on, and should be activated by set bit 0 of this register to “1” state

Address: Base + 0x00h

Attribute: Write only

Value: 01

◆ PCI Internal special control register

PCX-4288 internal control register, should be written with value 0FH before controlling PCX-4288 card

Address: Base + 002h

Attribute: Write only

Value: always are 0Fh

◆ Interrupt mask control register

Enable or disable PCI interrupt INT #A

Address: Base + 0x05h

Attribute: Write only

Value: 10H =enable PCI INT A#
00H=disable PCI INT #A

◆ Interrupt mode control register

Control the interrupt mode of DI_0 and DI_8 channels

Address: Base + 0x03h

Attribute: Write only

Value:

bit #1=0 : Disable interrupt form DI_0

bit #1=1,bit #0=0 : Enable falling edge interrupt form DI_0

bit #1=1,bit #0=1 : Enable rising edge interrupt form DI_0

bit #3=0 : Disable interrupt form DI_8

bit #3=1,bit #2=0 : Enable falling edge interrupt form DI_8

bit #3=1,bit #2=1 : Enable rising edge interrupt form DI_8

◆ Interrupt status register

Read the interrupt status of DI_0 and/or DI_8 channels or clear the interrupt status register

Address: Base+0C8h

Attribute: Read/write

Value:

Write: any data to clear interrupt status

Read: bit #0= DI_0 interrupt, bit #1=DI_8 interrupt

◆ I/O control registers

Address: Base + 0C0h~Base + 0E0h

Attribute: Read/Write

Value:

Port	Mode	Function
Base+0C0h	Write	Write data to relay output port #0 (NO_0~NO_7)
	Read	Read back current relay port #0 data (NO_0~NO_7)
Base+0C4h	Write	Write data to relay output port #1 (NO_8~NO_15)
	Read	Read back current relay port #1 data (NO_8~NO_15)
Base+0CC h	Write	No used
	Read	Read digital input port #0 (DI_0~DI_7)
Base+0E0h	Write	No used
	Read	Read digital input port #1 (DI_8~DI_15)

Table 3-1

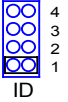
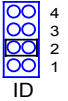
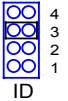
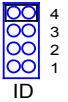
Chapter 4

Jumper setting

4.1 Card number setting

Maximum four PCX-4288 cards can be installed in system simultaneously with each has a unique card number.

A jumper called "ID" (see page 7) on the card is used to set the card number starts from 1 to 4

ID	Card number
 <p>4 3 2 1 ID</p>	1 (default setting)
 <p>4 3 2 1 ID</p>	2
 <p>4 3 2 1 ID</p>	3
 <p>4 3 2 1 ID</p>	4

Chapter 5 Operation Theorem

5.1 Digital Input Channels

The isolated digital inputs of PCX-4288 can accept both dry contact input and voltage input (wet contact). The input voltage range form 0V to 24V and input resistor is 4.7K ohms (47K option). The connection between outside signal and PCX-488 is shown in Figure 5-3

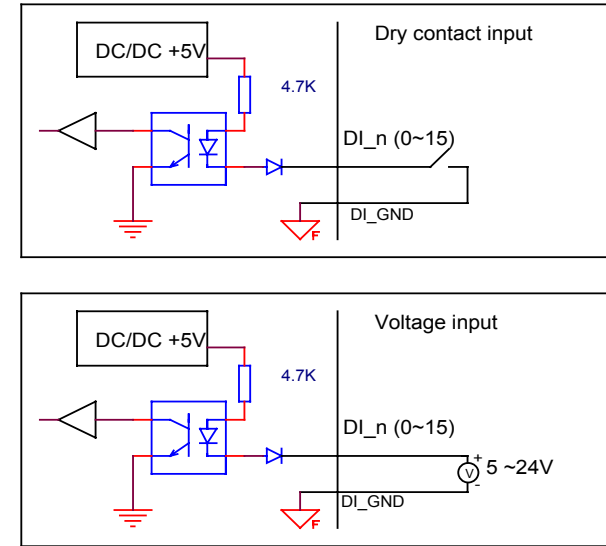


Figure 5-3 digital inputs of PCX-4288

5.2 Digital Output Channels

On PCX-4288, the COM_n pin is used as relay channel #n COMMON, NO_n pin is used as relay channel #n normal open output and NC_n pin is used as relay channel #n normal close output .The block as shown in Figure 5-4

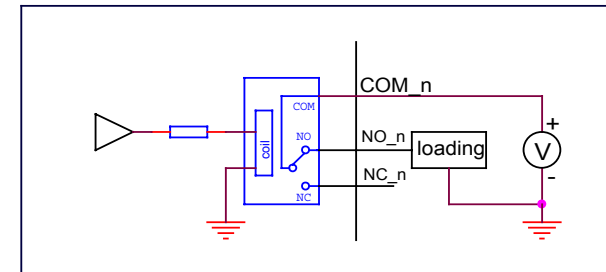


Figure 5-4 relay output of PCX-4288

5.3 Edge Change Detection

The ECD (Edge Change Detection) detection circuit is used to detect the edge of level change. In the PCX-4288, the detection circuit is applied to two input channels (DIO_0 and DIO_8). If channel is programmed to be rising edge or falling edge interrupt mode, the ECD detection circuit generate an interrupt request, when the signal inputs are changed from low to high level or high to low level respectively

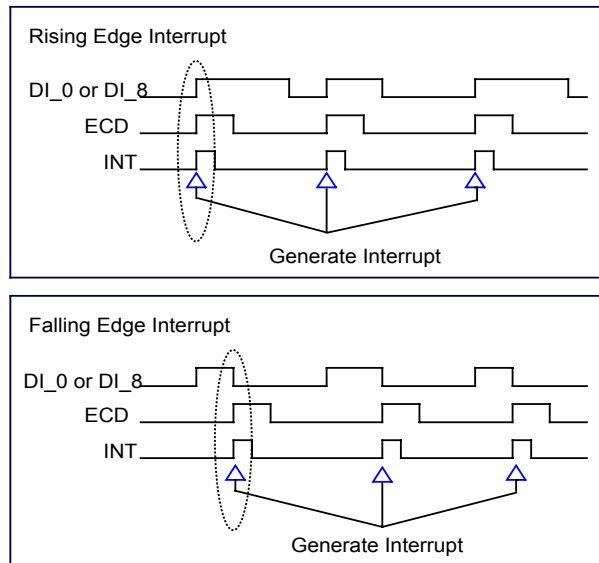


Figure 5-5 Debounce block diagram of PCX-4288

Chapter 6

Libraries

This chapter describes the software library for operating this card. Only the functions in DOS library and Windows 98/2000 DLL are described. Please refer to the PCIDAQ function reference manual, which included in Inlog CD for the descriptions of the Windows 98/NT/2000 DLL functions.

6.1 Libraries Installation

The device drivers and DLL functions of Windows 98/NT/2000 are included in the PCIDAQ. The Inlog CD also includes the detail examples and readme files

6.2 How to use the Functions in PCIDAQ.DLL

◆ VC++6.0:

1. Add file '../Include/PCIDAQ.H' in your project
2. In link page of menu project| setting, add '../LIB/PCIDAQ.LIB' in the blank of Objects/Library Modules
3. Add this sentence "#include '../Include/PCIDAQ.H' " to the head of your main file.

◆ Visual BASIC:

1. Add file '../Include/Declare.bas' in your project.

◆ Delphi:

1. Add file '../Include/Declare.pas' in your project
2. Add this sentence "uses Declare;" in the head of your unit.pas

◆ C++Builder:

1. Add file '../Include/PCIDAQ.H' and '../Lib/PCIDAQ_CB.lib' to your project
2. Add this sentence "#include '../Include/PCIDAQ.H' " to head of your main file.

Note: For more information, please refer to program in directory '../Example/'

6.3 Summary of function calls

Function	Description	Page
W_4288_Open	Initial PCX-4288 card before using other functions	24
W_4288_GetCardsID	Get PCX4288 card number	25
W_4288_Version	Get version number of PCIDAQ.DLL	26
W_4288_GetBusSlot	Get PCI bus and slot number occupied by PCX-4288	27
W_4288_Close	Close PCX-4288 card before terminating program	28
W_4288_ReadDi	Read digital input port data (8-bit)	29
W_4288_WriteRelay	Write data (8-bit) to digital output port	30
W_4288_ReadRelay	Read back current relay port value	31
W_4288_Set_RelayBit	Set a bit of port to high	32
W_4288_Reset_RelayBit	Reset a bit of port to low	33
D_4288_Read_IntStatus	Read interrupt status register (DOS only)	34
W_4288_Clear_IntStatus	Clear interrupt status register	35
W_4288_IntEnable	Enable digital input change interrupt	36
W_4288_IntDisable	Disable digital input interrupt	37

6.4 W_4288_Open

Description:

Because the PCX-4288 is PCI bus architecture and meets the plug and play design, the IRQ and base_address (pass-through address) are assigned by system BIOS directly. PCX-4288 cards have to be initialized by this function before calling other functions.

Syntax:

C/C++ (Dos)

```
WORD D_4288_Open (WORD cardNo);
```

C/C++ (Windows)

```
WORD D_4288_Open (WORD *ExistCards);
```

Visual BASIC (Windows)

Function W_4288_Open (ByRef ExitedCards As Long) As Long

Delphi

```
Function W_4288_Open (var ExistedCards:Integer): Integer;
```

Argument:

CardNo: card number be opened (for DOS only)

existCards: The number of installed PCX-4288 cards. (for Windows only)

This return value shows how many PCX4288 cards are installed in your system.

Return Code:

Error code (Please refer to PCIDAQ.H or DOSDAQ.H)

6.5 W_4288_GetCardsID:**Description:**

Get the cards number that is set by jumper on cards.

Syntax:**C/C++(DOS)**

```
void D_4232_GetCardsID (WORD *CardsIDArray);
```

C/C++(Windows)

```
WORD W_4288_GetCardsID (WORD *CardsIDArray);
```

Visual BASIC (Windows)

```
Function W_4288_GetCardsID (ByRef CardsIDArray As Long)
    As Integer
```

Delphi

```
Function W_4288_GetCardsID (var CardsIDArray:Word):Word;
```

Argument:

CardsIDArray : This array return card number(1,2,3,4) which is set by jumper on card. You should define a 4 elements array, and then pass the array's pointer to this function.

Return Code:

Error code (Please refer to PCIDAQ.H or DOSDAQ.H)

6.6 W_4288_Version**Description:**

PCIDAQ.DLL driver drives the PCX-4288 cards. This function returns the version of PCIDAQ.DLL driver

Syntax:**C/C++ (Dos)**

```
void D_4288_Version(char *version)
```

C/C++ (Windows)

```
WORD D_4288_Version (void)
```

Visual BASIC (Windows)

```
Function W_4288_Version () As Long
```

Delphi

```
Function W_4288_Version ():Integer;
```

Return Code:

Version: Version string (DOS only)

The version of PCIDAQ.DLL

6.7 W_4288_GetBusSlot

Description:

Get the PCI bus and slot occupied by PCX-4288

Syntax:

C/C++ (Dos)

```
WORD D_4288_GetBusSlot (WORD cardNo, WORD *bus,WORD *slot);
```

C/C++ (Windows)

```
W_4288_GetBusSlot (WORD cardNo, WORD *bus,WORD *slot);
```

Visual BASIC (Windows)

```
Function W_4288_GetBusSlot (ByVal cardNo As Long,  
    ByRef bus As Long, ByRef slot As Long) As Long
```

Delphi

```
Function W_4288_GetBusSlot (cardNo:Integer;  
    var portNo:Integer;var bitNo:Integer):Integer;
```

Argument:

cardNo: card number (1,2,3,4),It's set by jumper on card

Bus: return PCI bus Number

Slot: return PCI slot Number of the bus

Return Code:

Error code (Please refer to PCIDAQ.H or DOSDAQ.H)

6.8 W_4288_Close

Description:

The IRQ and base_address of PCX-4288 (pass-through address) are assigned by system BIOS directly. This function should be called to release all system resource before terminate application program

Syntax:

C/C++ (Dos)

```
WORD D_4288_Close (WORD cardNo)
```

C/C++ (Windows)

```
W_4288_Close (void)
```

Visual BASIC (Windows)

```
Function W_4288_Close ()
```

Delphi

```
Function W_4288_Close ();
```

Argument:

None

Return Code:

None

6.9 W_4288_ReadDI

Description:

This function is used to read data from digital input port. There are two 8-bit digital inputs on the PCX-4288. You can get 8-bit input data from PCX-4288 by calling this function.

Syntax:

C/C++ (Dos)

```
WORD D_4288_ReadDI (WORD cardNo,WORD portNo,WORD *DiData)
```

C/C++ (Windows)

```
W_4288_ReadDI (WORD cardNo,WORD portNo,WORD *DiData)
```

Visual BASIC (Windows)

```
Function W_4288_ReadDI (ByVal cardNo As Long,  
    ByVal portNo As Long, ByRef DiData As Long) As Long
```

Delphi

```
Function W_4288_ReadDI (cardNo:Integer;portNo:Integer;var  
    DoData:Integer): Integer;
```

Argument:

cardNo: Card number (1,2,3,4),It's set by jumper on card

portNo: Digital Input port number (0 or 1)

DiData: return digital input data

Return Code:

Error code (Please refer to PCIDAQ.H or DOSDAQ.H)

6.10 W_4288_WriteRelay

Description:

This function is used to write data to output port. There are two 8-bit digital outputs port on the PCX-4288. You can send 8-bit output data to PCX-4288 by calling this function.

Syntax:

C/C++ (Dos)

```
WORD D_4288_WriteRelay (WORD cardNo,WORD portNo,WORD Data);
```

C/C++ (Windows)

```
W_4288_WriteRelay (WORD cardNo,WORD portNo,WORD Data);
```

Visual BASIC (Windows)

```
Function W_4288_WriteRelay (ByVal cardNo As Long, ByVal  
    portNo As Long, ByVal Data As Long) As Long
```

Delphi

```
Function W_4288_WriteRelay (cardNo:Integer;portNo:Integer;  
    Data:Integer): Integer;
```

Argument:

cardNo: Card number (1,2,3,4),It's set by jumper on card

portNo: Relay output port number (0 or 1)

Data: Data be written to output port

Return Code:

Error code (Please refer to PCIDAQ.H or DOSDAQ.H)

6.11 W_4288_ReadRelay

Description:

This function is used to read current data of realy output port. There are two 8-bit digital outputs port on the PCX-4288. You can read back 8-bit output data of PCX-4288 by calling this function.

Syntax:

C/C++ (Dos)

```
WORD D_4288_ReadRelay (WORD cardNo,WORD portNo,WORD
    *RelayData);
```

C/C++ (Windows)

```
WORD W_4288_ReadRelay (WORD cardNo,WORD portNo,WORD
    *RelayData);
```

Visual BASIC (Windows)

```
Function W_4288_ReadRelay (ByVal cardNo As Long,
    ByVal portNo As Long, ByRef RelayData As Long) As
    Long
```

Delphi

```
Function W_4288_ReadRelay (cardNo:Integer;portNo:Integer;
    var DoData: Integer): Integer;
```

Argument:

cardNo: Card number (1,2,3,4),It's set by jumper on card

portNo: Relay output port number (0 or 1)

Data: Return current output data

Return Code:

Error code (Please refer to PCIDAQ.H or DOSDAQ.H)

6.12 W_4288_Set_RelayBit

Description:

Set a relay channel ON (energized)

Syntax:

C/C++ (Dos)

```
WORD D_4288_Set_RelayBit (WORD cardNo,WORD portNo,WORD
    bitNo);
```

C/C++ (Windows)

```
W_4288_Set_RelayBit (WORD cardNo,WORD portNo, WORDbitNo);
```

Visual BASIC (Windows)

```
Function W_4288_Set_RelayBit (ByVal cardNo As Long,
    ByVal portNo As Long, ByVal bitNo As Long) As Long
```

Delphi

```
Function W_4288_Set_RelayBit (cardNo:Integer;portNo:
    Integer; bitNo:Integer):Integer;
```

Argument:

cardNo: Card number (1,2,3,4),It's set by jumper on card

portNo: Relay output port number (0 or 1)

bitNo: Channel Number(0 to 7)

Return Code:

Error code (Please refer to PCIDAQ.H or DOSDAQ.H)

6.13 W_4288_Reset_RelayBit

Description:

Set a relay channel Off (dis-energized)

Syntax:

C/C++ (Dos)

```
WORD D_4288_Reset_RelayBit (WORD cardNo,WORD portNo,WORD
    bitNo);
```

C/C++ (Windows)

```
WORD W_4288_Reset_RelayBit (WORD cardNo,WORD portNo, WORD
    bitNo);
```

Visual BASIC (Windows)

```
Function W_4288_Reset_RelayBit (ByVal cardNo As Long,
    ByVal portNo As Long, ByVal bitNo As Long) As Long
```

Delphi

```
Function W_4288_Reset_RelayBit (cardNo:Integer;portNo:
    Integer; bitNo:Integer): Integer;
```

Argument:

cardNo: Card number (1,2,3,4),It's set by jumper on card

portNo: Relay output port number (0 or 1)

bitNo: Channel Number(0 to 7)

Return Code:

Error code (Please refer to PCIDAQ.H or DOSDAQ.H)

6.14 D_4288_Read_IntStatus

Description:

Get the interrupt status (for DOS only)

Syntax:

C/C++ (DOS)

```
WORD D_4288_Read_IntStatus (WORD cardNo,WORD *IntStatus)
```

Argument:

cardNo: card number set by jumper on the card

IntStatus: return PCI interrupt status.

if bit0 = 1,interrupted by channel 0 (DI_0)

if bit1 = 1,interrupted by channel 9 (DI_8)

Return Code:

Error code (Please refer to PCIDAQ.H or DOSDAQ.H)

6.15 W_4288_Clear_IntStatus

Description:

Clear interrupt by writing data to Base Port+0xC8

Syntax:

C/C++ (Dos)

```
WORD D_4288_Clear_IntStatus (WORD cardNo);
```

C/C++ (Windows)

```
W_4288_Clear_IntStatus (WORD cardNo);
```

Visual BASIC (Windows)

```
Function W_4288_Clear_IntStatus (ByVal cardNo As Long) As Long
```

Delphi

```
Function W_4288_Clear_IntStatus(cardNo:Integer):Integer;
```

Argument:

cardNo: card number (1,2,3,4),It's set by jumper on card

Return Code:

Error code (Please refer to PCIDAQ.H or DOSDAQ.H)

6.16 W_4288_IntEnable

Description:

Enable Interrupt of channel #0 (DI_0) and/or channel #8 (DI_8)

Syntax:

C/C++ (Dos)

```
WORD D_4288_IntEnable (WORD cardNo,WORD Int1Mode,
WORD Int2Mode,User_Interrupt_HANDLER
userIntServiceRoutine);
```

C/C++ (Windows)

```
WORD W_4288_IntEnable (WORD cardNo,WORD Int1Mode,WORD
Int2Mode, User_Interrupt_HANDLER
userIntServiceRoutine);
```

Visual BASIC (Windows)

```
Function W_4288_IntEnable (ByVal cardNo As Long, ByVal
Int1Mode As Long, ByVal Int2Mode As Long,
ByVal userIntServiceRoutine As Long) As Long
```

Delphi

```
Function W_4288_IntEnable (cardNo:Integer;Int1Mode:Integer;
Int2Mode:Integer; userIntServiceRoutine:Pointer):
Integer;
```

Argument:

cardNo: card number (1,2,3,4),It's set by jumper on card

Int1Mode: Interrupt mode of channel #0 (DI_0)

Bit #0=1 or 0: rising or falling edge Interrupt

Bit #1=1 or 0: enable/Disable interrupt

Int2Mode: Interrupt mode of channel #8 (DI_8)

Bit #0=1 or 0: rising or falling edge Interrupt

Bit #1=1 or 0: enable/disable interrupt

userIntServiceRoutine: user Interrupt service routine called when interrupt occurs.

Return Code:

Error code (Please refer to PCIDAQ.H or DOSDAQ.H)

6.17 W_4288_IntDisable

Description:

Disable interrupt of digital input channel #0 (DI_0) and channel #8 (DI_8)

Syntax:

C/C++ (Dos)

```
WORD W_4288_IntDisable (WORD cardNo);
```

C/C++ (Windows)

```
WORD W_4288_IntDisable (WORD cardNo);
```

Visual BASIC (Windows)

```
Function W_4288_IntDisable (ByVal cardNo As Long)
```

Delphi

```
Function W_4288_IntDisable (cardNo:Integer);
```

Argument:

cardNo: card number (1,2,3,4),It's set by jumper on card

Return Code:

Error code (Please refer to PCIDAQ.H or DOSDAQ.H)

Chapter 7

PI-837 Terminal board

PI-837 digital input/output termination board features one 37-pin D-type connector for easy maintenance, wiring, and installation. It provides 37 channels that are accessed through a 37-pin D-type connector.

Each terminal pin is in series with 0 ohms resistor to relative pin on the D-type connector. These resistors can be changed to the desired value to meet the requirement of your applications

